

GE Aviation Loadable Defaults Definition Tool Available for Download

Dear valued GE Aviation FMS customer,

The GE Aviation Loadable Defaults Definition Tool (LDDT) is available to download from the following link:
<https://www.geaviation.com/systems/avionics/navigation-guidance/database-services>

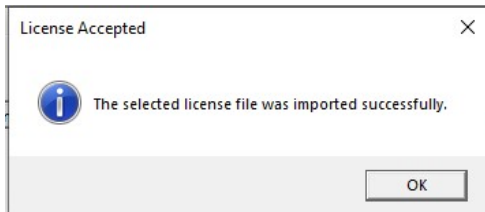
Follow these steps to install the LDDT:

1. Download the “LDDT_Setup.zip” and “Configuration Files.zip” files.
2. Unzip the LDDT_Setup.zip file.
3. Double click on the “LDDT_setup.exe” file.
4. Follow the prompts of the setup wizard.
 - a. Read and accept the End User Software License Agreement. Click “Next>”.
 - b. Select the Destination Location for the LDDT by clicking the “Browse...” button or accept the default location which is C:\Program Files (x86)\GE Aviation Systems LLC\Loadable Defaults Tools\Loadable Defaults Definition Tool. Click “Next>”
 - c. Confirm “Create a desktop shortcut” is checked if you want to create a desktop shortcut. Click “Next>”.
 - d. Click “Install”.
 - e. Click “Finish”.
5. When the installation completes you will be notified that a license file was not found. Click “Request License...”.

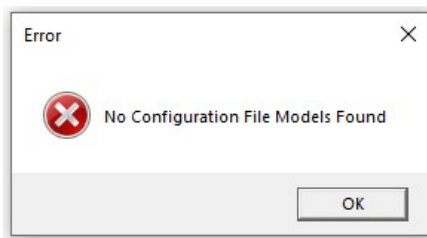
Feature Name	Feature Value	Expires	Expires In
--------------	---------------	---------	------------

6. Complete the form either by typing your Company Name and Company Country in the appropriate boxes and click “Submit via Email...” or by clicking “Copy to Clipboard” and then paste the information in an email to navdatainfo@ge.com.
7. When you receive your license file via email from GE, save it to your desktop or a location of your choice.

8. Go to the location you chose in step 4b and double-click on “LDDT.exe”
9. Click “Import New License...”
10. Browse to and select the saved license file from step 7 and then click on “Open”.
11. Agree to the terms and conditions and click “Continue”.
12. Click “OK” to close the License Accepted message.



13. Click on “Close” to close the License Information window.
14. The “No configuration File Models Found” error message will be displayed. Click “OK”.



15. Unzip the “Configuration Files.zip” file from step 1.
16. Copy all the files from the unzipped LDDT Configuration Files folder into the Loadable Defaults Definition Tool\Configuration\Configuration Files folder of the LDDT install location selected in step 4b
17. The LDDT is now ready to use. Double click “LDDT.exe” from the location you chose in step 4b or the desktop shortcut.
18. The Help file contains a User Manual which provides instructions for using the tool.

If you have any questions, please send an email to GE Aviation at NavDataInfo@ge.com.

Thank you very much.

Best regards,

The GE Aviation FMS Navigation Database team